

Worlds Chat



User's



Guide

ABOUT THIS GUIDE

This user's guide provides installation information, an overview of the Worlds Chat interface and functions, and basic procedures to help you get started with Worlds Chat. For detailed information, click **Help** on the Help menu (or press F1) while you're running Worlds Chat.

<i>INSTALLING WORLDS CHAT</i>	3
<i>GETTING HELP</i>	3
<i>QUITTING WORLDS CHAT</i>	3
<i>SYSTEM REQUIREMENTS</i>	4
<i>STARTING UP WORLDS CHAT FOR THE FIRST TIME</i>	5
<i>CONNECTING TO WORLDS CHAT</i>	6
<i>CHOOSING AN AVATAR</i>	8
<i>STARTING WORLDS CHAT ONCE YOU ARE REGISTERED</i>	8
<i>MOVING IN THE WORLDS CHAT SPACE STATION</i>	9
<i>CHATTING WITH OTHERS</i>	11
<i>QUICK KEY REFERENCE</i>	13
<i>MENU COMMANDS QUICK REFERENCE</i>	14
<i>THE WORLDS CHAT WINDOW</i>	15

GETTING STARTED

INSTALLING WORLDS CHAT

1. Insert the Worlds Chat disc in the CD-ROM drive.
2. If you have Windows 95, the install program starts automatically. If you have Windows 3.1, go to the Program Manager. On the File menu, click Run. In the Command field, type:
d:\wgc\setup.exe (assuming d:\ is your CD-ROM drive).
3. Follow the instructions on the screen.

GETTING HELP

Extensive on-line Windows Help is available by choosing Help from the menu bar. If your question is not answered there, check out our customer help pages at <http://www.worlds.net>. These web pages include answers to frequently asked questions, trouble-shooting tips and phone support information.

QUITTING WORLDS CHAT

Press the ESC key, or on the File menu, click Exit.

SYSTEM REQUIREMENTS

- * Minimum configuration is a 486DX2/50 with 8 MB of memory. The recommended platform is a Pentium processor with 16 MB of memory.
- * Windows 3.1 or Windows 95. Windows NT and Win OS/2 with a properly configured Winsock library can also run Worlds Chat.
- * 256 Color mode.
- * 16-bit sound card. 8-bit sound cards may create performance problems, in which case you can turn off the sound option.
- * TCP/IP Connection.

STARTING UP WORLDS CHAT FOR THE FIRST TIME

1. Establish a full Internet connection: See page 6 for details.
2. To start the program in Windows 3.1, click the Worlds Chat icon. In Windows 95, click Start, and point to Programs, then Worlds, then Worlds Chat 1.0 Gold.
3. Choose an avatar: See "Choosing an Avatar" on page 8.
4. A Sign On screen will appear. Click the New User button.
5. In the User Name field, type in a name that is 2 to 12 characters long. Press the TAB key to move to the next field.
6. In the Password field, type in a password that is 4 to 16 characters long. Press the TAB key to move to the next field.
7. In the Confirm field, type your password again. Your password must be typed identically in both fields, or you will need to re-enter it. Press the TAB key to move to the next field.
8. In the Serial Number field, type the 16 character serial number from the sticker inside your CD case. Note that the serial number is case sensitive.
9. In the E-mail field, type in your e-mail address. This is an optional field, and will be held in strict confidence.
10. Press ENTER or click the Enter Worlds Chat button.

**YOUR USER NAME AND PASSWORD ARE PERMANENT!
CHOOSE THEM CAREFULLY, AND REMEMBER THEM.**

CONNECTING TO WORLDS CHAT

To use Worlds Chat you need a full connection to the Internet. This can either be direct, like the T1 lines that many businesses and schools have, or a dial-up connection using SLIP or PPP. You must establish your Internet connection BEFORE opening Worlds Chat. Note that not all Internet service providers offer the required TCP/IP connection.

STARTING WORLDS CHAT WITHOUT AN ACTIVE INTERNET CONNECTION WILL PUT YOU IN SINGLE USER MODE: YOU WILL NOT BE ABLE TO SEE OR TALK WITH OTHERS.

CONNECTING FROM AMERICA ONLINE

1. First, make sure you are using America Online (AOL) for Windows version 2.5 or later.
2. Go to keyword "winsock." Follow the instructions. The download takes about a minute. Make sure to backup existing winsock software before you install AOL's version.
3. Sign off AOL, restart Windows and log on to AOL again. You'll now have TCP/IP access over your normal AOL connection.
4. Wait until the America Online Main Menu appears, and switch to the Program Manager (Windows 3.1) or the Start menu (Windows 95).
5. Click on the Worlds Chat icon to begin.

CONNECTING FROM COMPUSERVE

1. Click on the Go icon and type "PPP" to get to CompuServe's Internet area.
2. Select "Download Net Launcher for Windows"; it is a 1.2mb download.
3. Install it and follow the instructions; it will create a new program group that includes the CompuServe Internet Dialer.
4. Click on "Dial" and you will connect to your normal CompuServe number with TCP/IP access.
5. Once you are connected, switch to the Program Manager (Windows 3.1) or the Start menu, Programs (Windows 95).
6. Click on the Worlds Chat icon to begin.

CONNECTING FROM THE MICROSOFT NETWORK

1. On the MSN Sign In screen, click the "Settings" button.
2. Click the "Access Numbers" button; a dialog box appears.
3. In the Service Type field, select Internet and the Microsoft Network.
4. In the Primary and Backup fields, select **full access** phone numbers for your area, click Change and click OK.
5. Click OK in the Connections Settings dialog to accept the changes.
6. Restart MSN, sign in, then click on the Worlds Chat icon.

CHOOSING AN AVATAR

When you first sign on to Worlds Chat, you will enter the Avatar Gallery, where you can choose an avatar to visually represent you in cyberspace.

To choose an avatar:

1. Move around the Avatar Gallery and view the avatars.
2. Click the left mouse button once to get a cursor.
3. Move the cursor to the avatar portrait of your choice. The portrait frame will highlight in yellow.
4. Click on the avatar you want to see.
5. To choose the avatar, click the Accept button. To continue looking for another avatar, click the Cancel button, and repeat the above steps.

STARTING WORLDS CHAT ONCE REGISTERED

1. Activate a full Internet connection.
2. Click on the Worlds Chat icon to start the program.
3. Click the Registered User button. (You can also log in as a guest by clicking the Guest Button: You will be assigned a guest name, and will be able to access a limited area only.)
4. Type in your password, and press ENTER or click the Enter Worlds Chat button.

EXPLORING WORLDS CHAT

MOVING IN THE WORLDS CHAT SPACE STATION

After choosing an Avatar and entering Worlds Chat, you will find yourself in the main hub of the Space Station. Once there, you can move around by using the mouse or the keyboard. As you continue your exploration of Worlds Chat, you will find some other ways of getting around: you can teleport, ride elevators and use farcasters.



You can move whenever you don't have a cursor on the screen. If you have a cursor, click on the green 'walking man' icon to return to movement mode.

	...with the mouse:	...with the keyboard:
To move forward:	Move forward	Up arrow key
To move backward:	Move backward	Down arrow key
To turn in place:	Move side to side	Right & Left arrows

- * To accelerate forward constantly, hold down the right mouse button. This allows you to move and turn at the same time.
- * To slide to the side facing the same way, hold down the SHIFT key and move the mouse from side to side.

TELEPORTING AND THE PLACES MENU



While moving through Worlds Chat can be a lot of fun, it can also be time-consuming to travel “by foot” a long distance. You can use the map of the Space Station to teleport instantly between the main hub and the different platforms, or you can add your own locations to the Places menu and teleport right to your custom Place.

- * To Teleport with the Map, click on the desired platform or section.
- * To add a custom place to your Places menu, navigate to the desired place and click Add to Places on the Places menu. You can add up to ten places.
- * To go to a place you’ve added, click the Places menu and select the desired place from the list.

ELEVATORS

Elevators have sliding doors and look like small rooms. When you enter an elevator, turn to the side and look for buttons. Sometimes there are both “up” and “down” buttons, sometimes just one or the other. Click once to get a cursor and then click a button to send the elevator on its way.

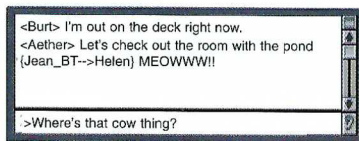
FARCASTERS

A farcaster is a special device that can take you to a new location. They look like a shimmering doorway, through which you can see a partial image of your destination. To use a farcaster, just walk through it, and then wait a few moments while you are taken to a new location.

CHATTING WITH OTHERS

Conversing with other users is as easy as typing on your keyboard. Once you have successfully connected to Worlds Chat, just type what you want to say and press ENTER when you are ready to transmit. Your message will be delivered to the six avatars closest to you, appearing as a text message in their Speech Box, just above the Input Box. Your messages are also echoed back to you in the Speech Box, so you can carry on typed conversations with those around you.

As you move through the environment, you can see the six avatars closest to you, and they can see you. Anyone who can see you can also read your messages, so be sure to treat your virtual neighbors with the same respect you would show to anyone physically present.



MUTE - IGNORING UNDESIRED CONVERSATIONS

The Mute feature allows you to block messages from people you wish to ignore. This feature only blocks the messages from displaying on your computer - other users will continue to get the messages. You can undo a Mute command with an Unmute command. Both of these commands are described in the Help file.

WHISPERS - PRIVATE CONVERSATIONS

To hold private conversations with another individual or a group of people, you can use the Whisper feature. A whisper is a message that can be heard only by a recipient you select. Another handy aspect of the whisper feature is that you don't have to be next to someone to whisper to them. A whisper can be heard across great distances, anywhere in Worlds Chat!

To send a whispered message:

1. Click the left mouse-button once to get a cursor.
2. To address a whisper to someone you can see, click on their avatar. To address a whisper using the Who List, click Who on the People menu, then click on the username of the person you want to whisper to.
3. A pop-up menu box will appear: click on Whisper To.
4. Type in your message and press ENTER to send your whisper.

There are also ways to whisper to people you can't see, and a Whisper menu with handy shortcuts. See the "Whispers" topic in the Help file for details.

GROUP WHISPERS

Group Whispers are much like a conference call: you can hold private conversations with anyone you declare as a member of your group. Just click on their avatar, and then select Group Member from the menu to add a person to your group.

Once you've completed your group, type your message and press both SHIFT and ENTER to send a message to just your group. See the "Group Whispers" topic in the Help file for more details.

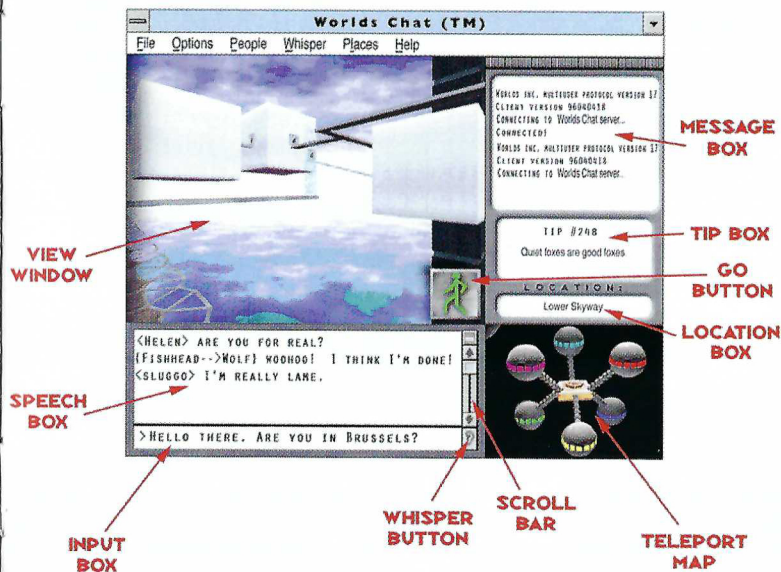
QUICK KEY REFERENCE

ESC	Exits the program.
F1	Launches the Help system.
F2	Toggles sound on and off.
F3	Toggles music on and off.
F4	Toggles bobbing on and off.
F5	Displays the frame rate (number of frames per second).
F6	Enters the username of the last person you whispered to.
F7	Enters the username of the last person who whispered to you.
F8	Enters the special command for sending a Group Whisper.

MENU COMMANDS QUICK REFERENCE

FILE MENU	
Exit	Exits the program.
OPTIONS MENU	
Sound	Turns sound effects on and off.
Music	Turns music on and off.
Bobbing	Toggles bobbing motion on and off.
Font	Sets the display font to small, medium or large.
PEOPLE MENU	
Who?	Displays a list of the six people closest to you in the room.
Mute List	Displays a list of names of the people you have muted.
Group List	Displays a list of the people in your whisper group.
WHISPER MENU	
Last	Enters the username of the last person you whispered to.
Reply	Enters the username of the last person who whispered to you.
Group Whisper	Enters the special command for sending a Group Whisper.
History	Displays a History of all the people with whom you've exchanged whispers.
PLACES MENU	
Add to Places	Adds the current Place to the Places menu. Any other Places you've added will also appear here.
HELP MENU	
Help	Launches the on-line Help program.
About WChat	Provides information about Worlds Chat.

THE WORLDS CHAT WINDOW



The software described in this document is furnished pursuant a license agreement. The software may be used or copied only under the terms of the license agreement.

©1995-1996 Worlds Inc. All rights reserved. Printed in the USA.

Worlds Chat is a trademark of Worlds Inc.

Worlds is a registered trademark of Worlds Inc.

This document also contains trademarks of companies other than Worlds Inc.

UPGRADES

Your Worlds Chat Gold CD-ROM package will be operational until Worlds Inc. upgrades its service and releases new client software or discontinues its service. As an existing customer of Worlds Inc., you can receive the next upgrade at a special price. See our World Wide Web page at <http://www.worlds.net> for more information about Worlds Inc. products.

Worlds Inc.

605 Market Street

San Francisco, CA 94105 USA

<http://www.worlds.net>

email: sales@worlds.net

